

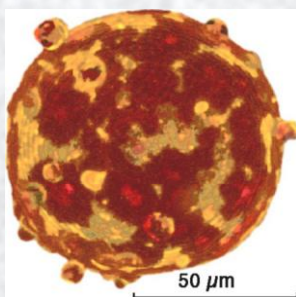
Faculty Opening in Materials Engineering

The Washington University in St. Louis School of Engineering and Applied Sciences invites nominations and applications for a tenure-track faculty position in materials engineering at the level of assistant professor. The applicant should have demonstrated expertise in advanced materials synthesis.

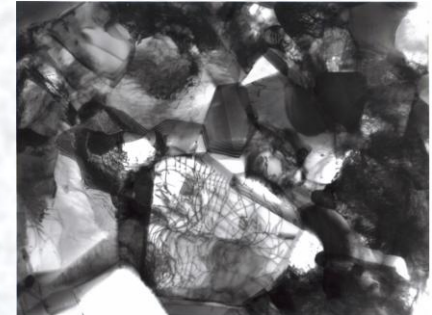
Our strategic plan emphasizes intersections of engineering with medicine, biology, and energy. However, opportunities for collaboration exist in many application areas, as well as in basic science. Research programs of particular interest include: adaptive materials, biomaterials, materials for sustainable energy, and nanoscale materials.

The successful applicant will be based in the Department of Mechanical, Aerospace, and Structural Engineering (<http://mase.wustl.edu/>), and will be expected to contribute to university-wide initiatives such as the Center for Materials Innovation, the International Center for Advanced Renewable Energy and Sustainability, the McDonnell Academy Global Energy and Environment Partnership, and/or the Nano Research Facility. Opportunities are available for joint appointments in departments throughout the university, including at the school of medicine.

An earned doctoral degree is required at the time of appointment. The applicant must have the ability to teach effectively at both the undergraduate and graduate levels and to establish and maintain a strong, externally-funded research program. Competitive start-up funding is available.



Mechanical, Aerospace & Structural Engineering



Applications and questions may be addressed by e-mail to the co-chair of the search committee, Prof. Guy Genin: materials_search@seas.wustl.edu

To apply, please e-mail to this address a single PDF file containing:

- 1) *curriculum vitae*;
- 2) *statements of research plan, teaching interests and philosophy, and career objectives (not to exceed 5 pages); and*
- 3) *the names, e-mail addresses and telephone numbers of at least three references.*

Review of applications will begin immediately, but applications will be accepted until the position is filled. Washington University is an Equal Opportunity and Affirmative Action Employer. Applications from women and under-represented minority groups are strongly encouraged.

100 nm

